



# ERGIC-3 Polyclonal Antibody

<b>Catalog No</b>	YP-Ab-00696
<b>Isotype</b>	IgG
<b>Reactivity</b>	Human;Mouse
<b>Applications</b>	WB;IHC;IF;ELISA
<b>Gene Name</b>	ERGIC3
<b>Protein Name</b>	Endoplasmic reticulum-Golgi intermediate compartment protein 3
<b>Immunogen</b>	The antiserum was produced against synthesized peptide derived from human ERGIC3. AA range:321-370
<b>Specificity</b>	ERGIC-3 Polyclonal Antibody detects endogenous levels of ERGIC-3 protein.
<b>Formulation</b>	Liquid in PBS containing 50% glycerol, 0.5% BSA and 0.02% sodium azide.
<b>Source</b>	Polyclonal, Rabbit,IgG
<b>Purification</b>	The antibody was affinity-purified from rabbit antiserum by affinity-chromatography using epitope-specific immunogen.
<b>Dilution</b>	Western Blot: 1/500 - 1/2000. Immunohistochemistry: 1/100 - 1/300. Immunofluorescence: 1/200 - 1/1000. ELISA: 1/20000. Not yet tested in other applications.
<b>Concentration</b>	1 mg/ml
<b>Purity</b>	≥90%
<b>Storage Stability</b>	-20°C/1 year
<b>Synonyms</b>	ERGIC3; C20orf47; ERV46; SDBCAG84; CGI-54; Endoplasmic reticulum-Golgi intermediate compartment protein 3; Serologically defined breast cancer antigen NY-BR-84
<b>Observed Band</b>	43kD
<b>Cell Pathway</b>	Endoplasmic reticulum-Golgi intermediate compartment membrane ; Multi-pass membrane protein . Golgi apparatus, cis-Golgi network membrane ; Multi-pass membrane protein . Endoplasmic reticulum membrane ; Multi-pass membrane protein . Cycles between the endoplasmic reticulum and the Golgi.
<b>Tissue Specificity</b>	Brain,Embryo,Fetal liver,Liver,Mammary gland,Skin,
<b>Function</b>	function:Possible role in transport between endoplasmic reticulum and Golgi.,similarity:Belongs to the ERGIC family.,subcellular location:Cycles between the endoplasmic reticulum and the Golgi.,subunit:Interacts with ERGIC1/ERGIC32.,
<b>Background</b>	function:Possible role in transport between endoplasmic reticulum and Golgi.,similarity:Belongs to the ERGIC family.,subcellular location:Cycles between the endoplasmic reticulum and the Golgi.,subunit:Interacts with ERGIC1/ERGIC32.,



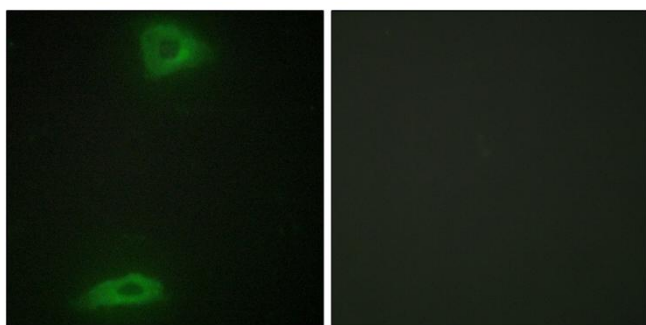
**matters needing attention**

Avoid repeated freezing and thawing!

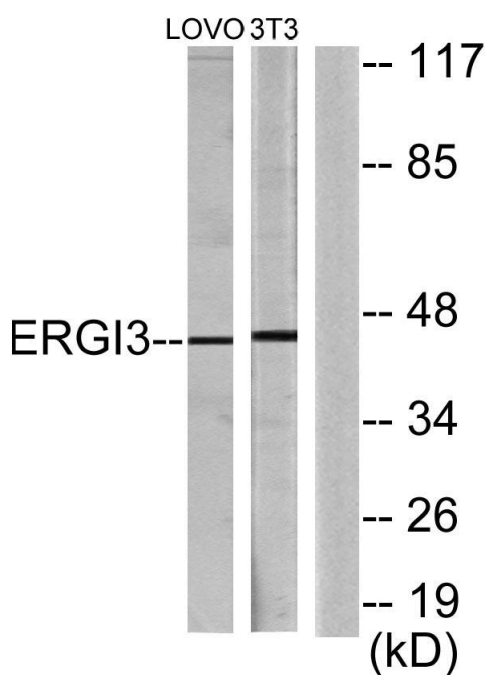
**Usage suggestions**

This product can be used in immunological reaction related experiments. For more information, please consult technical personnel.

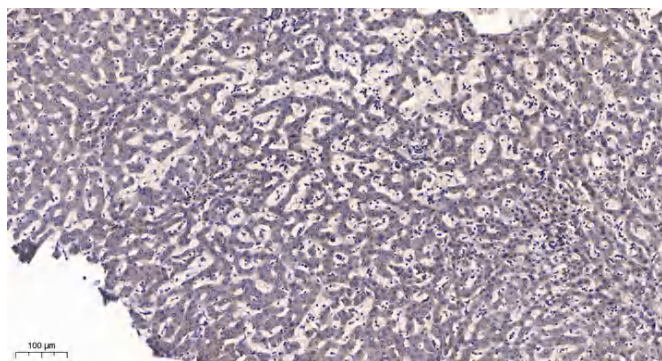
## Products Images



Immunofluorescence analysis of HepG2 cells, using ERGI3 Antibody. The picture on the right is blocked with the synthesized peptide.



Western blot analysis of lysates from LOVO and NIH/3T3 cells, using ERGI3 Antibody. The lane on the right is blocked with the synthesized peptide.



Immunohistochemical analysis of paraffin-embedded human liver cancer. 1, Antibody was diluted at 1:200(4° overnight). 2, Tris-EDTA,pH9.0 was used for antigen retrieval. 3,Secondary antibody was diluted at 1:200(room temperature, 45min).